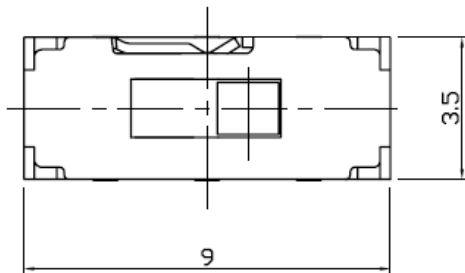
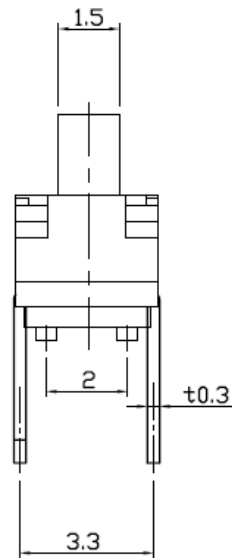
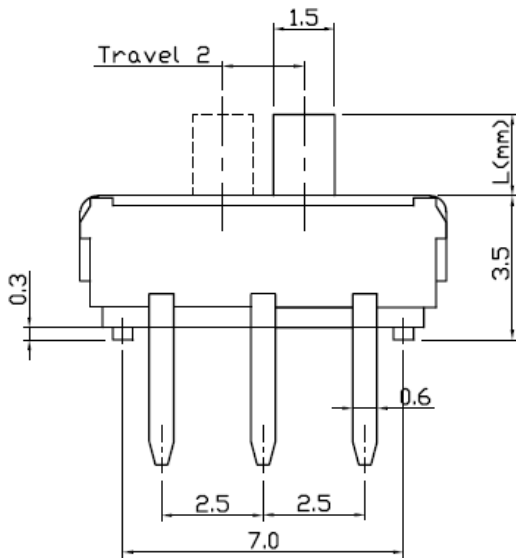
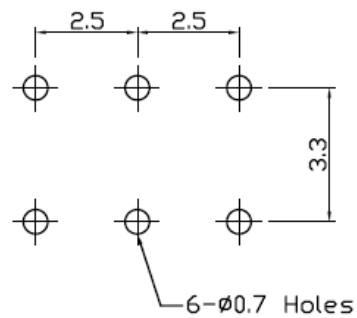


DIMENSIONS

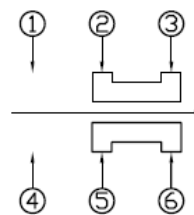


P.C.B MOUNTING PATTERN DIMENSION

The following soldering patterns are recommended for reflow soldering



CIRCUIT DIAGRAM



SPECIFICATIONS

1. RATING : DC6V 0.3A
2. CIRCUIT : 2C-2P
3. TIMEING : NON-SHORTING
4. TRAVEL : 2.0 ± 0.3 mm
5. OPERATING FORCE : 200 ± 100 gf
6. CONTACT RESISTANCE : $70m\Omega$
7. LIFE : 10,000 CYCLES

B	3.0
A	4.0
-	2.0
L	mm



銓基電子股份有限公司
ROKI ELECTRONICS CO., LTD.

PART NAME : SLIDE SWITCH

PART NO : SS22005-PF Series

TOLERANCE : ± 0.3 mm



SCALE :

UNIT : mm

VER : R02